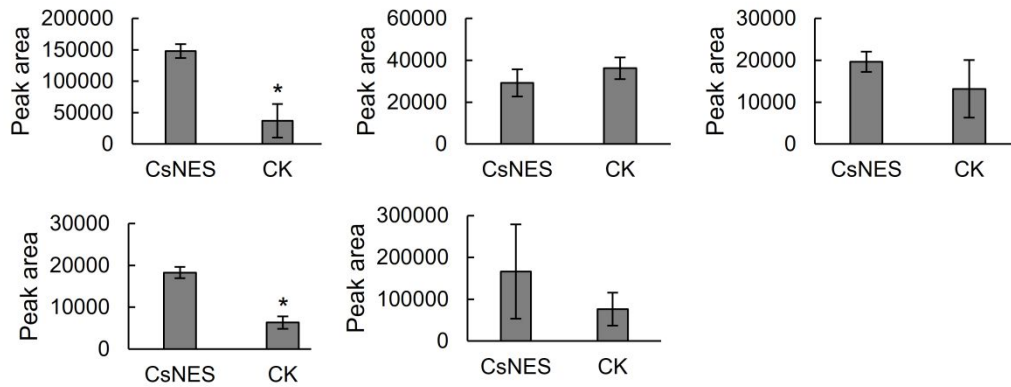


### Supporting information



**Figure S1 Enzyme activity assay of CsNES using tea plant mesophyll protoplast.**

The results of five independent experiments are shown. y-axis is the peak area of formed nerolidol. CK: mesophyll protoplast transfected with empty vector; CsNES: mesophyll protoplast transfected with CsNES. All data are means of three independent replicates and error bars represent  $\pm$ SD. \* indicates statistically significant differences ( $p \leq 0.05$ ). Three independent protoplast transfections were performed. Each transfected protoplasts were used for enzyme activity assay and was considered as one replicate. The experiments were performed for five times at different time to identify the stability of results.