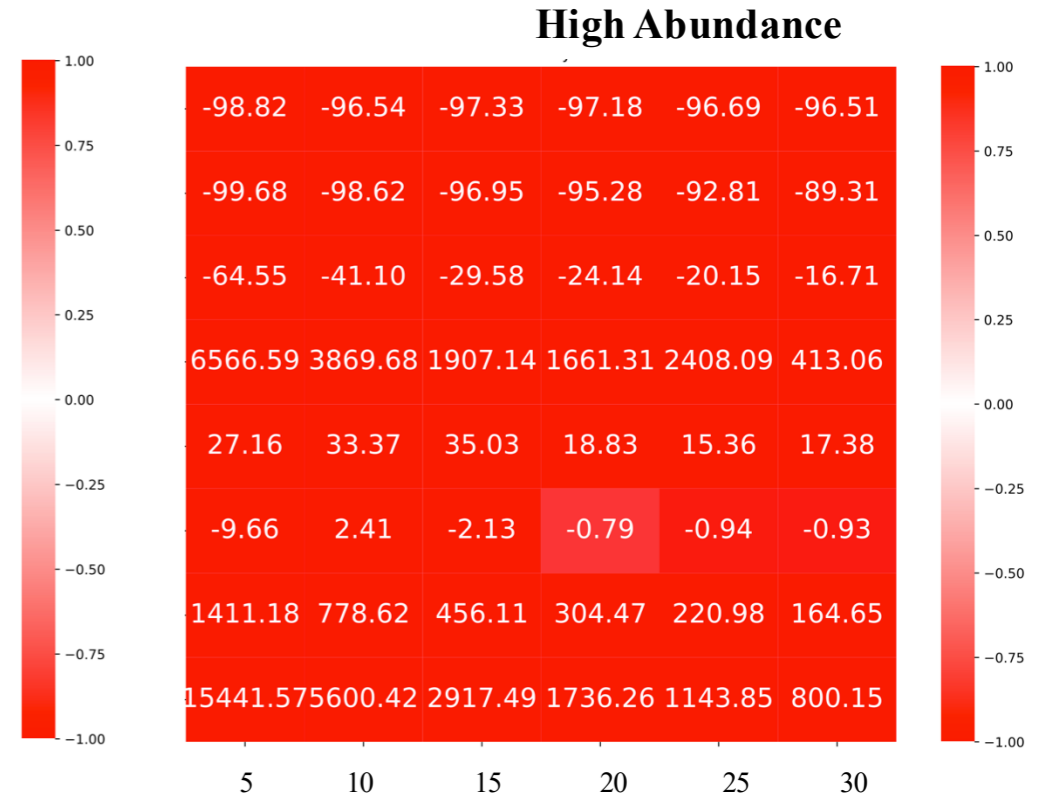
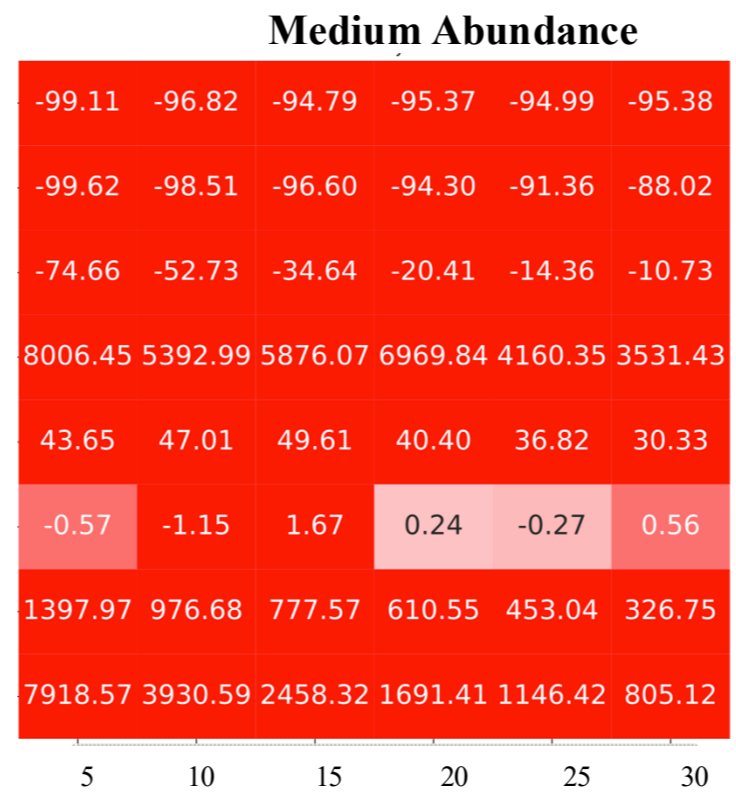
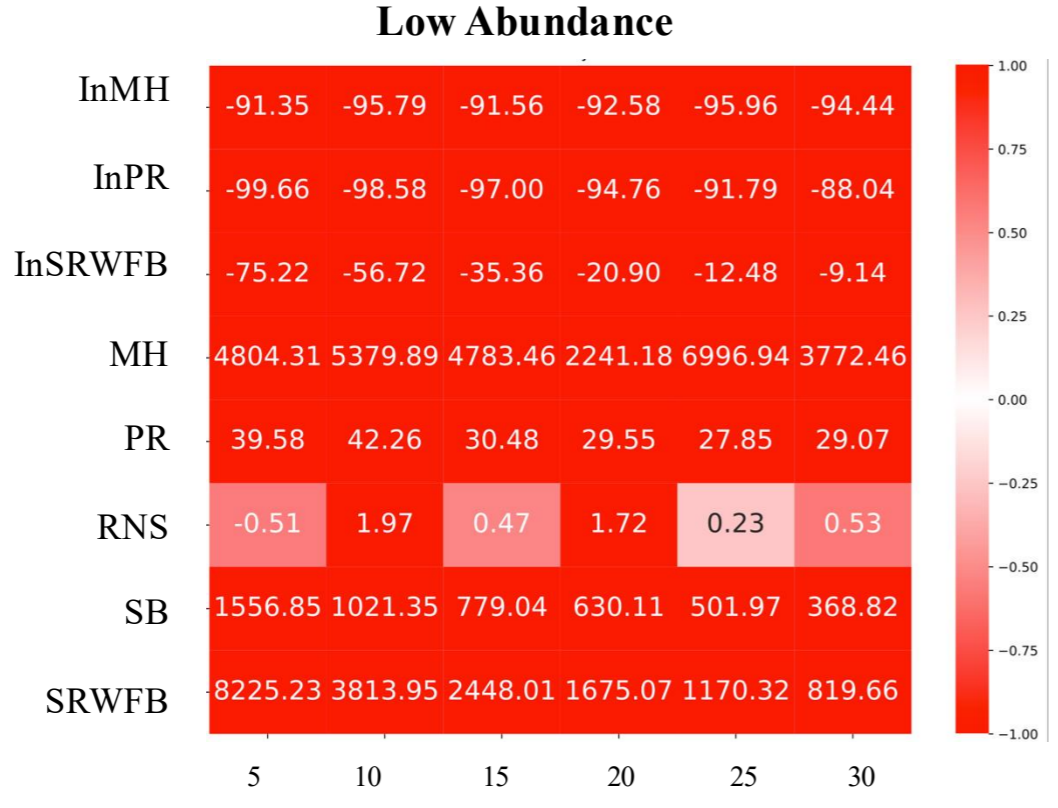


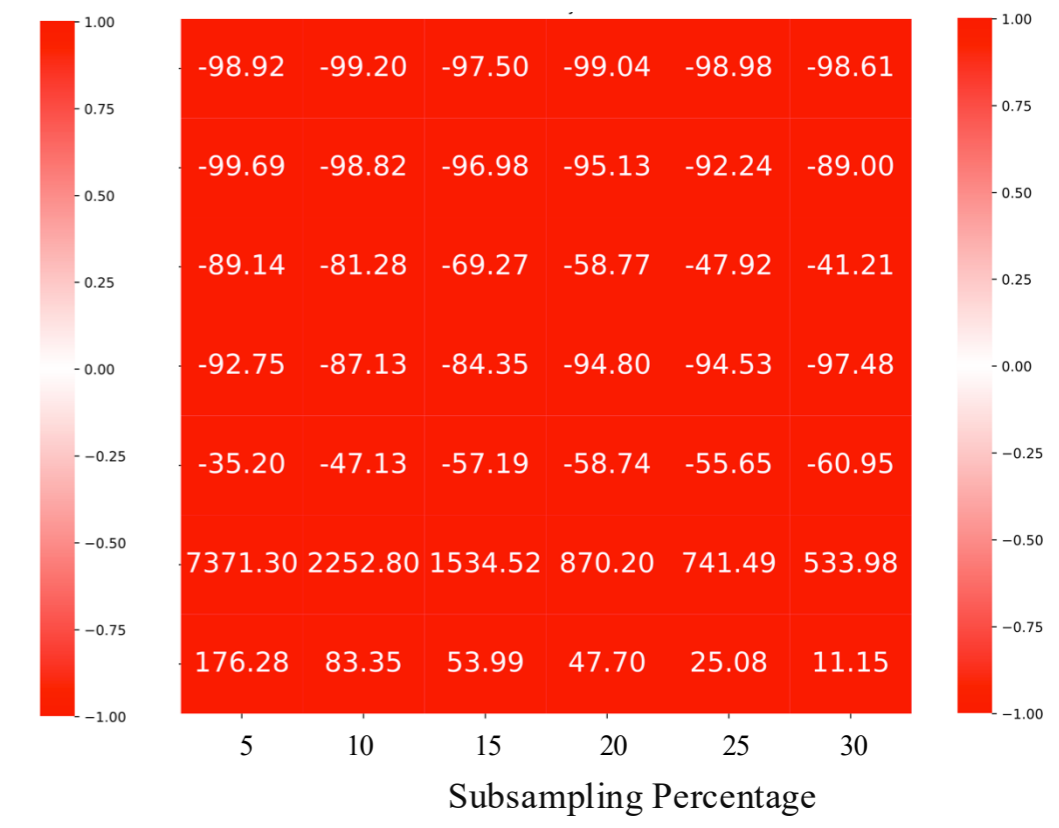
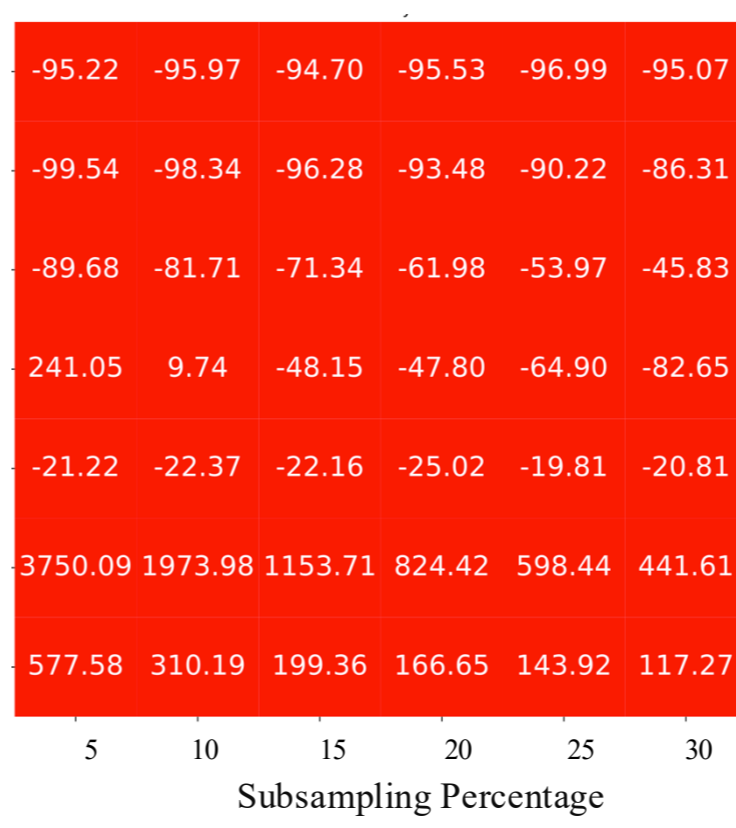
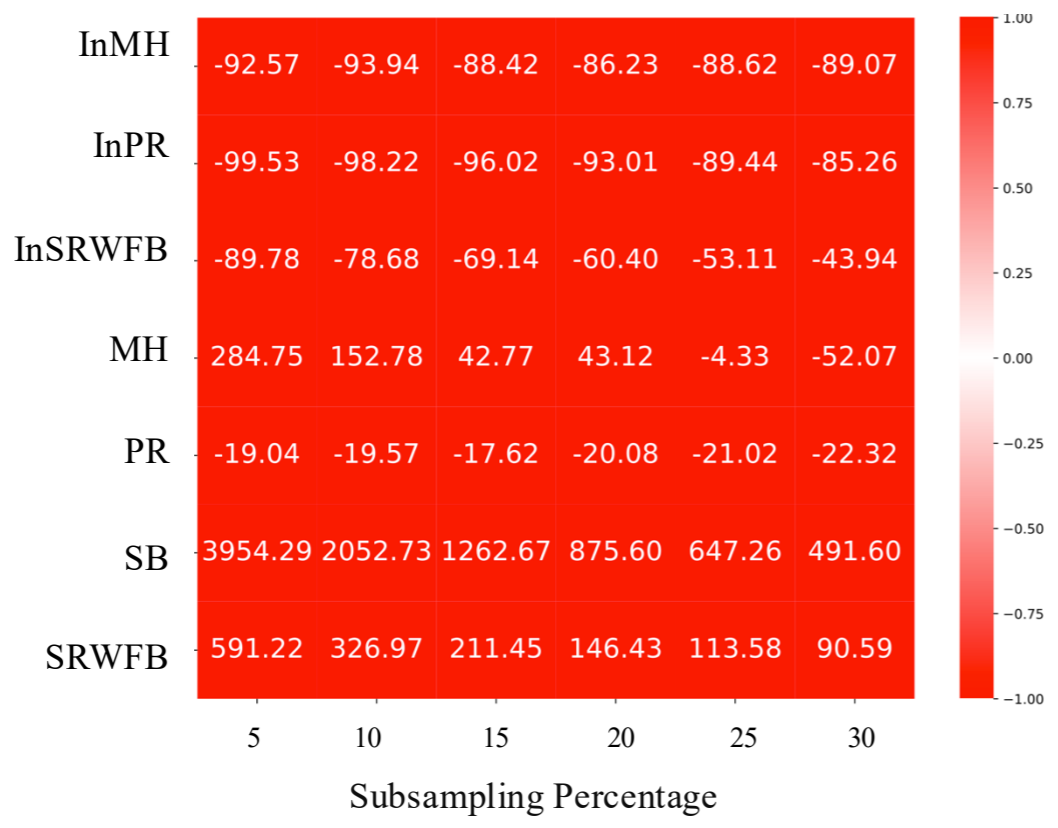
Direct Method

Algorithms



Combined Method

Algorithms



Supplementary Figure 6. Relative difference in density between subsampled and original clone-based networks across sampling algorithms and abundance levels. Relative difference in density was calculated as the change in edge density after subsampling (subsampled networks' minus original networks'), then normalized by the original network density. Top row: direct method; bottom row: combined method. In each heatmap, columns indicate subsampling percentages, and rows indicate sampling algorithms. Panels grouped by abundance level (Low, Medium, High, left to right). Lighter color indicates smaller difference.