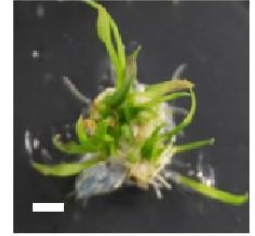
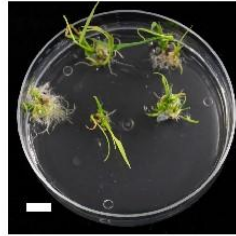
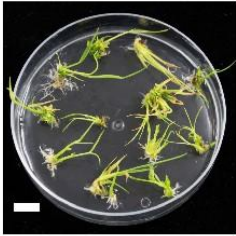


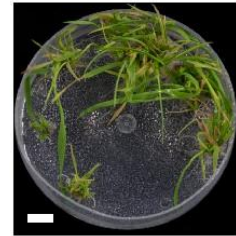
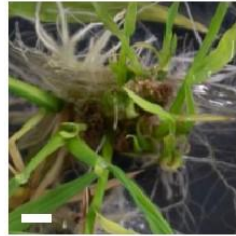
GSN1-OX

GSN1-KO

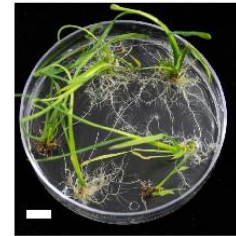
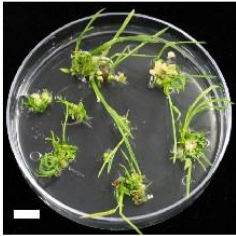
NGZ



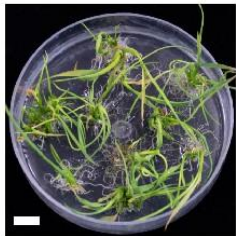
ZS97



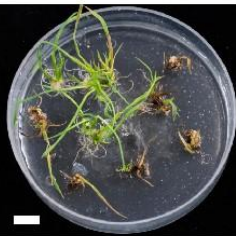
YD 6



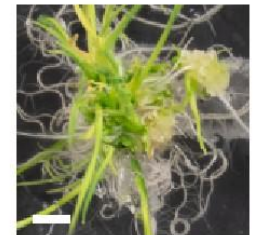
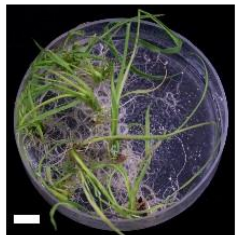
HHZ



Kasalath



ZH11



Supplemental Figure 5. Phenotypes of regenerated shoots from six rice cultivars in shoot induction medium (SIM). Shoots and young roots were observed in SIM. Scale bars = 1 cm and 0.2 cm, respectively. Statistical analysis is shown in Figure 3.