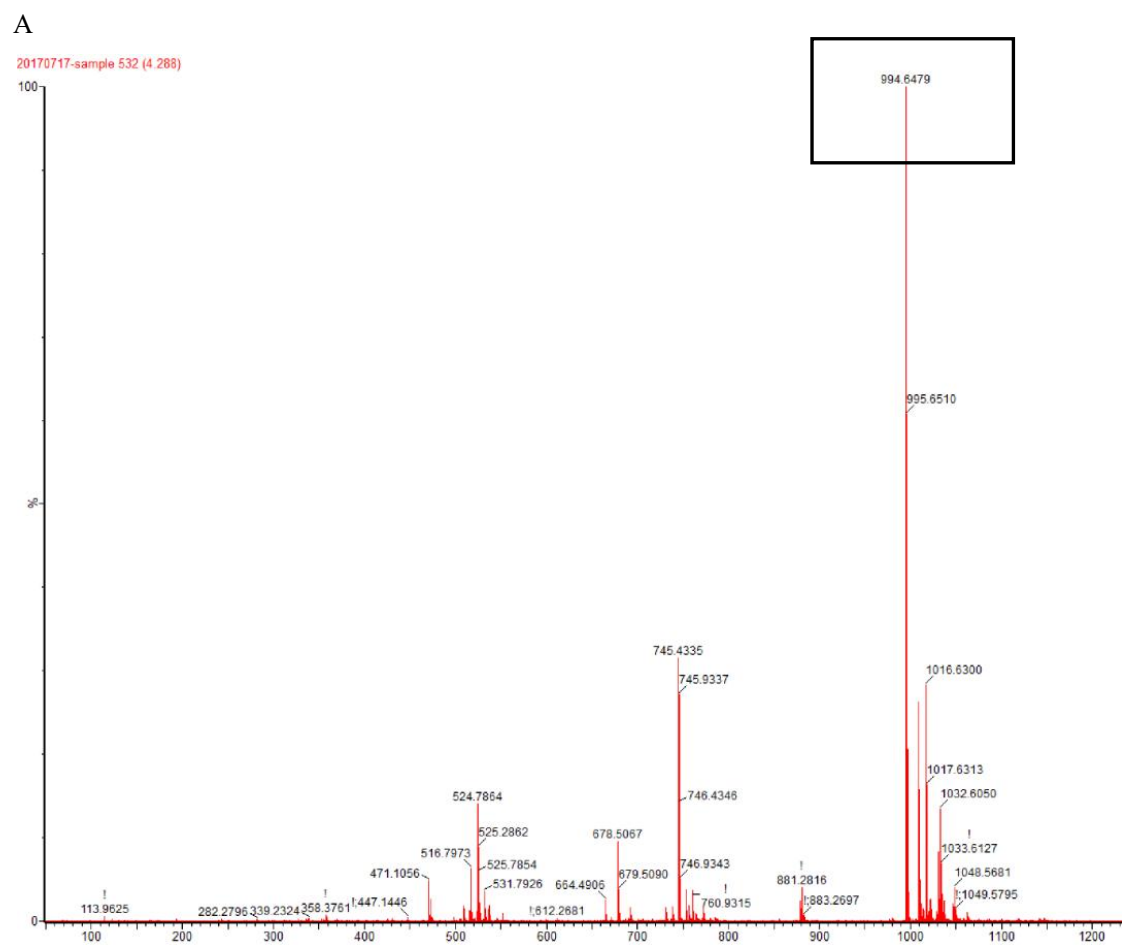
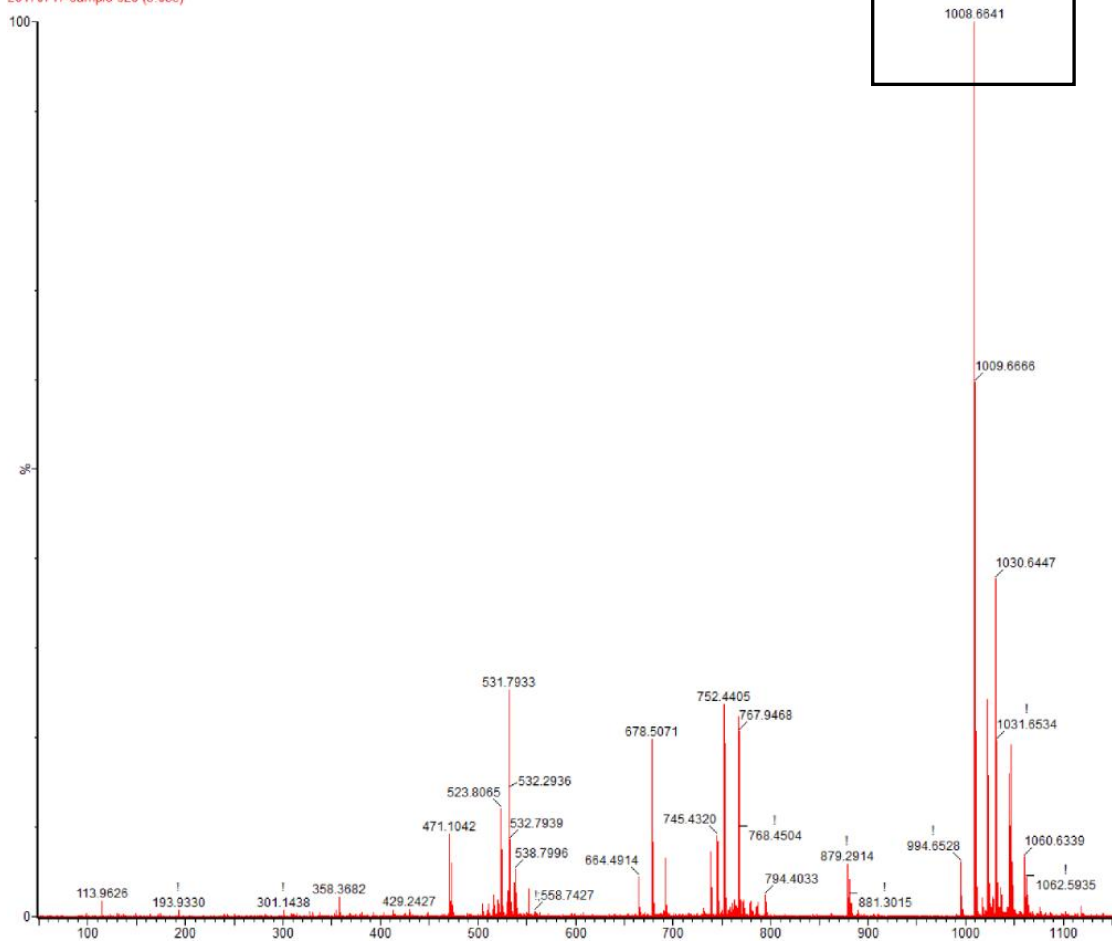


Each peak (m/z) of surfactin and fengycin families. A~E: surfactin family; F~H: fengycin family.



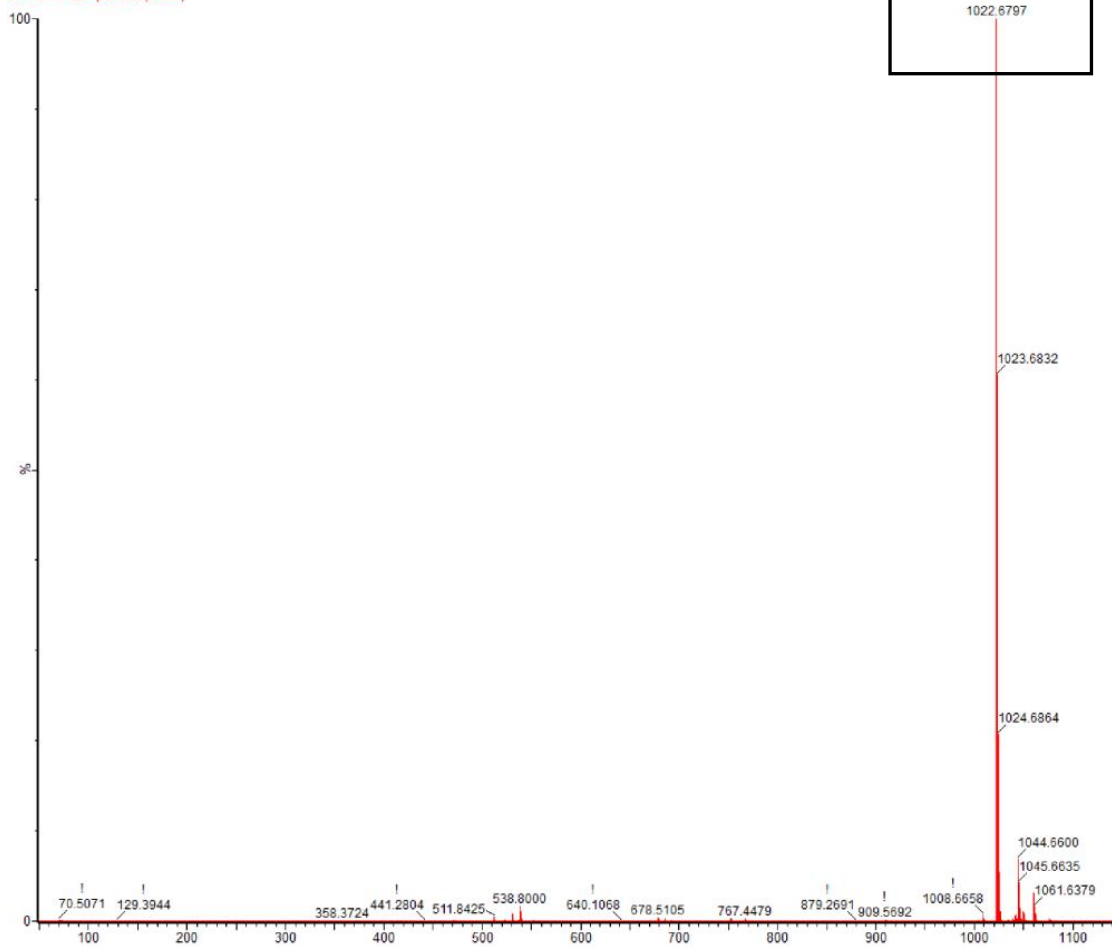
B

20170717-sample 628 (5.053)



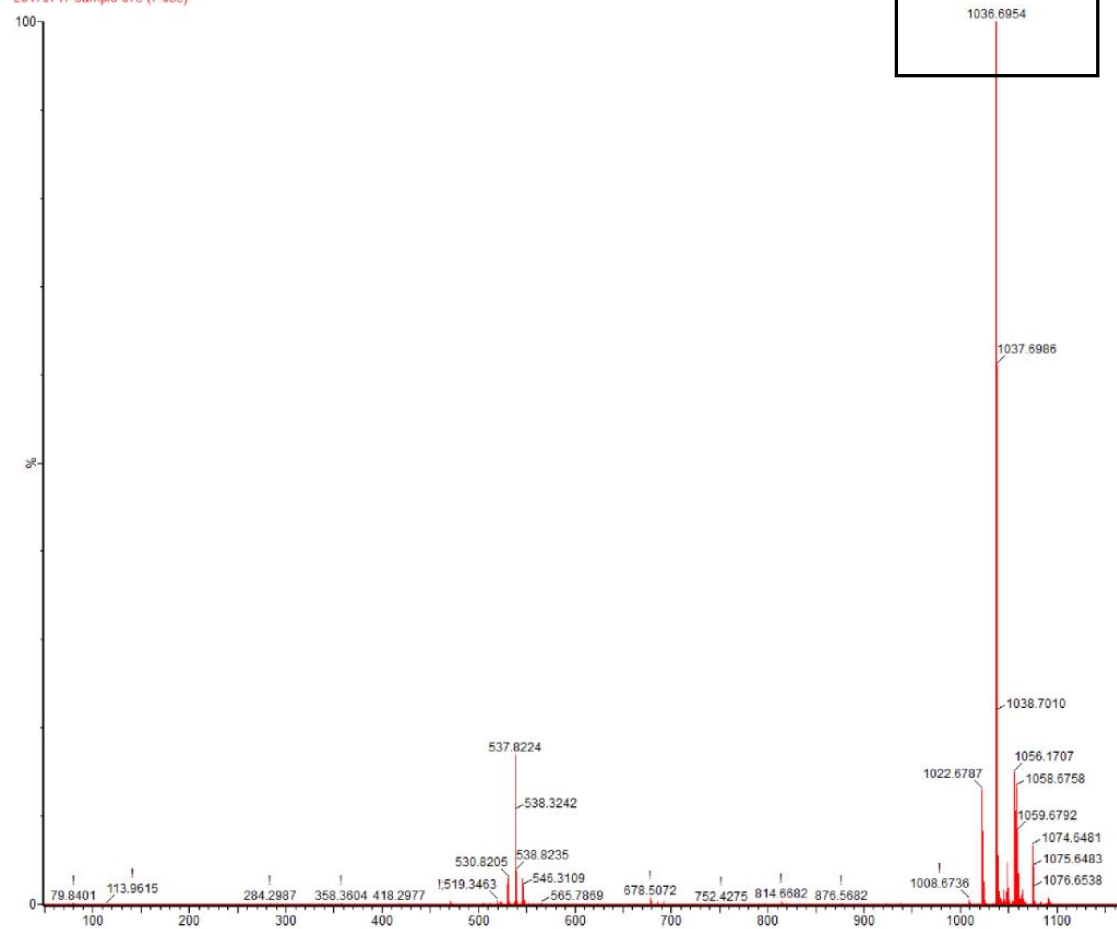
C

20170717-sample 655 (5.286)



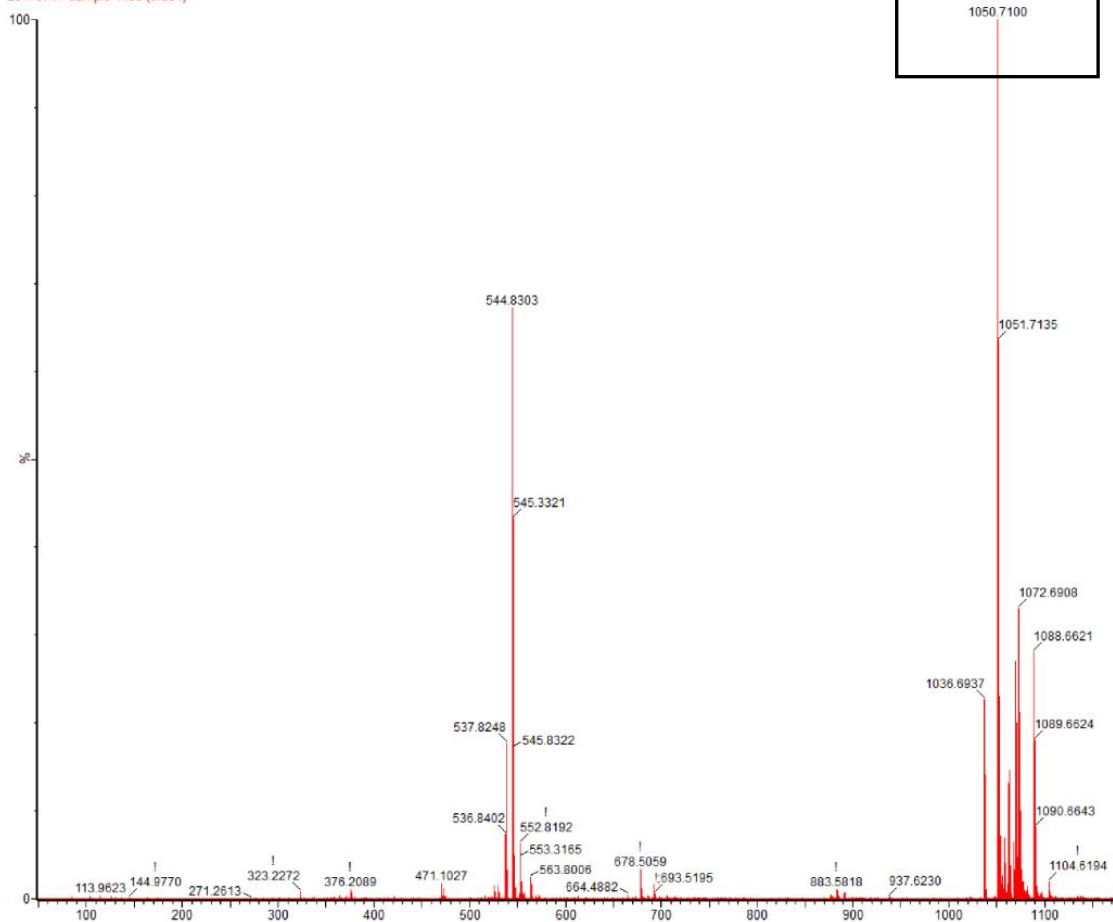
D

20170717-sample 875 (7.035)



E

20170717-sample 1186 (9 534)



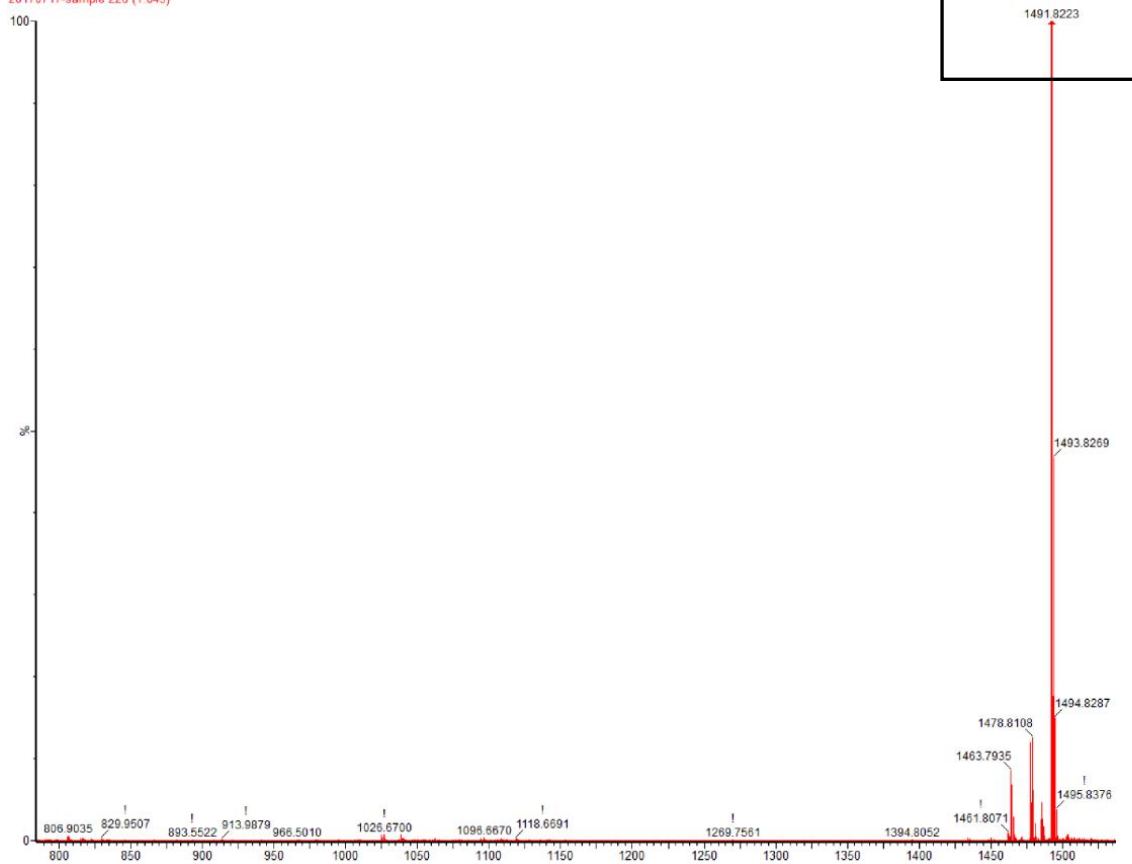
F

20170717-sample 202 (1.634)

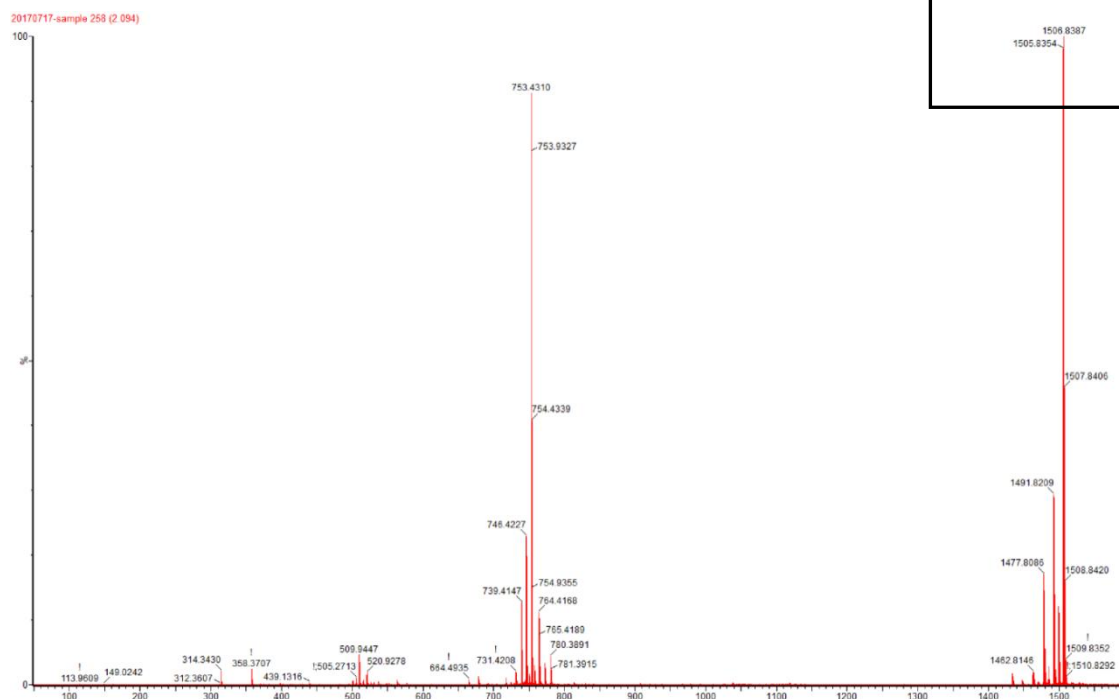


G

20170717-sample 225 (1.845)



H



UPLC-ESI-QTOF-MS analysis of the crude lipopeptides produced by *B. subtilis* ge28. The chromatogram shows m/z of fengycin and its analogues, surfactin and its analogues separately, positive ion mode, TIC.

