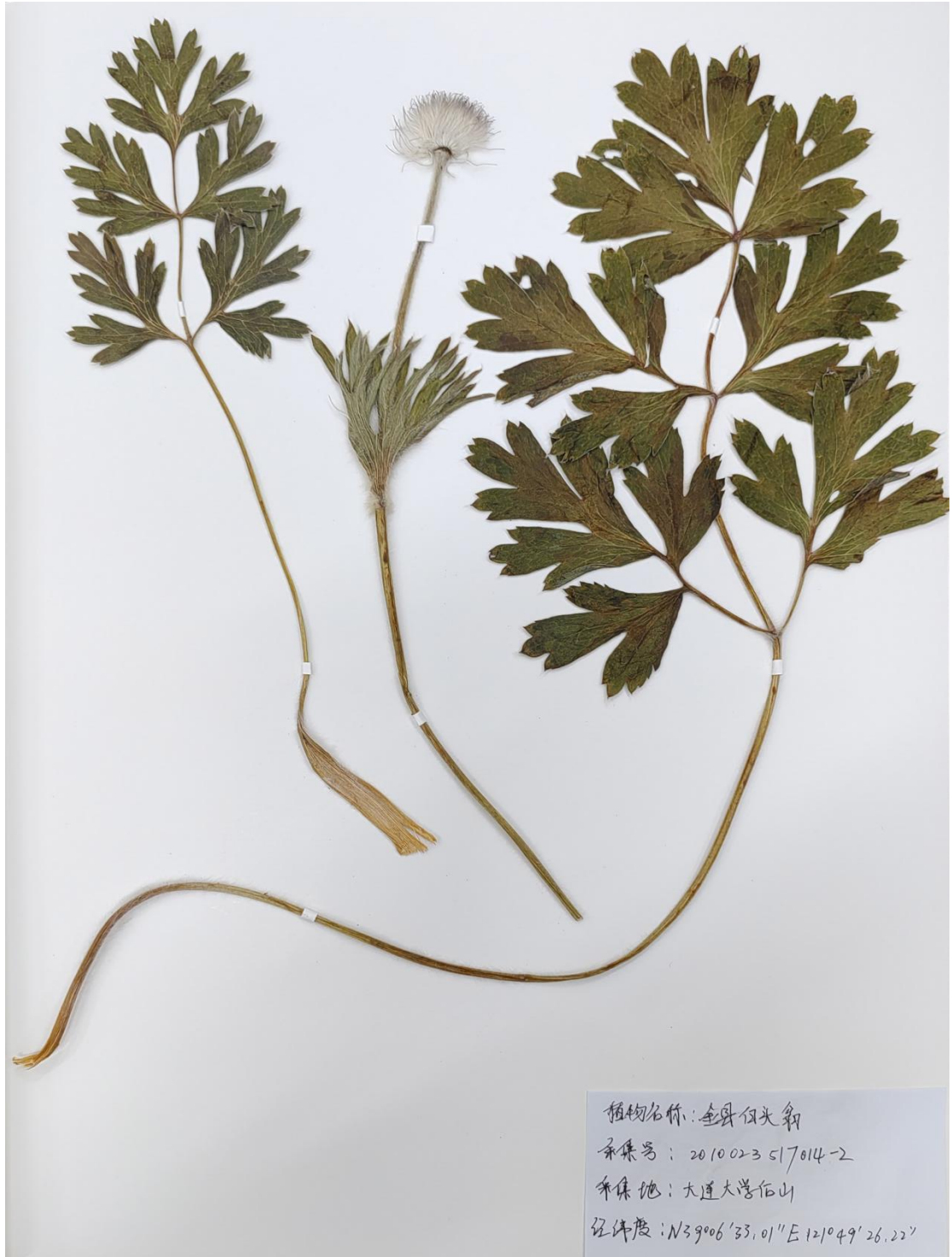




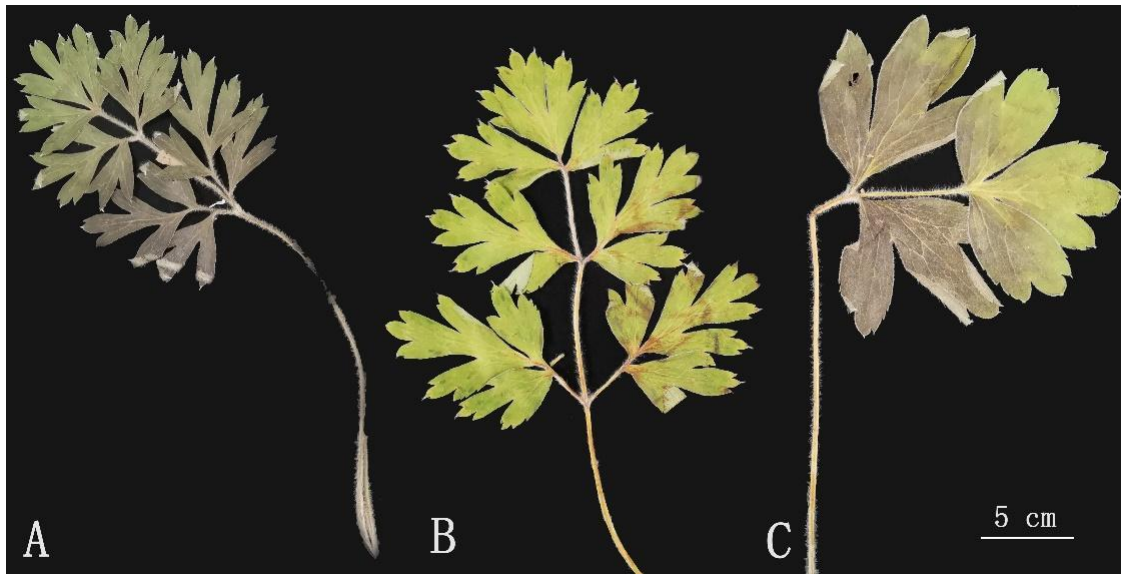
a.



b.



c.



d.

**Figure S1** Photos of three *Pulsatilla* specimens.

The specimens are preserved in the Teaching and Research Section of Cultivation and Identification of Chinese herbs of Liaoning University of Traditional Chinese Medicine. a: *P. cernua*. b: *P. chinensis* var. *Kissii*. c: *P. chinensis*. d: A comparison diagram of leaf shapes of three species of *Pulsatilla* (A: *P. cernua*. B: *P. chinensis* var. *Kissii*. C: *P. chinensis*).