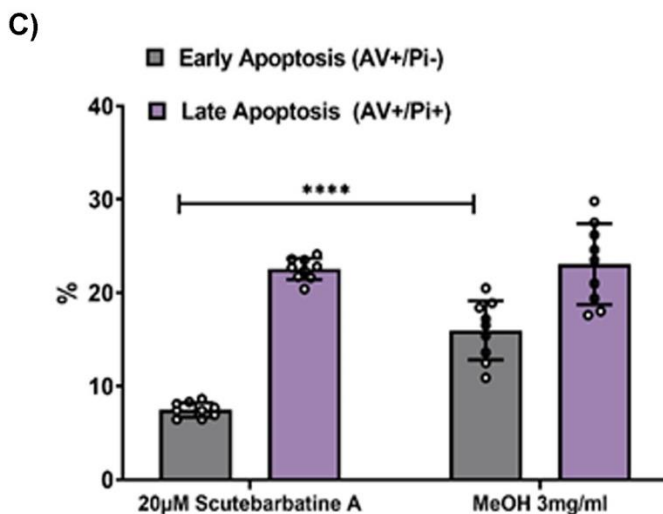
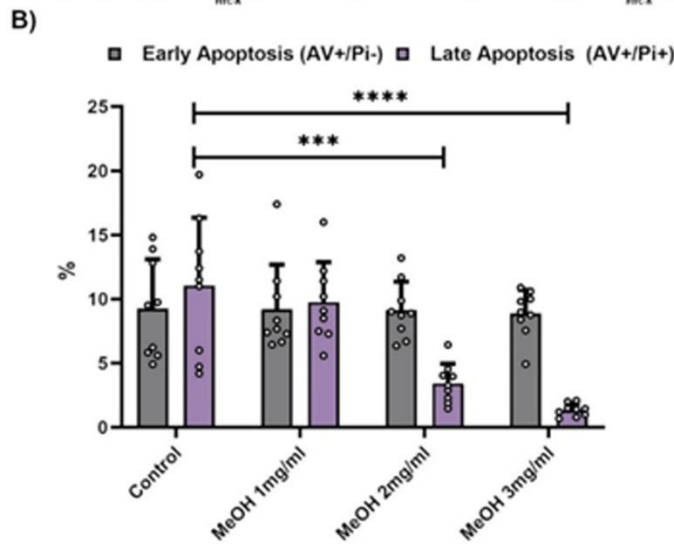
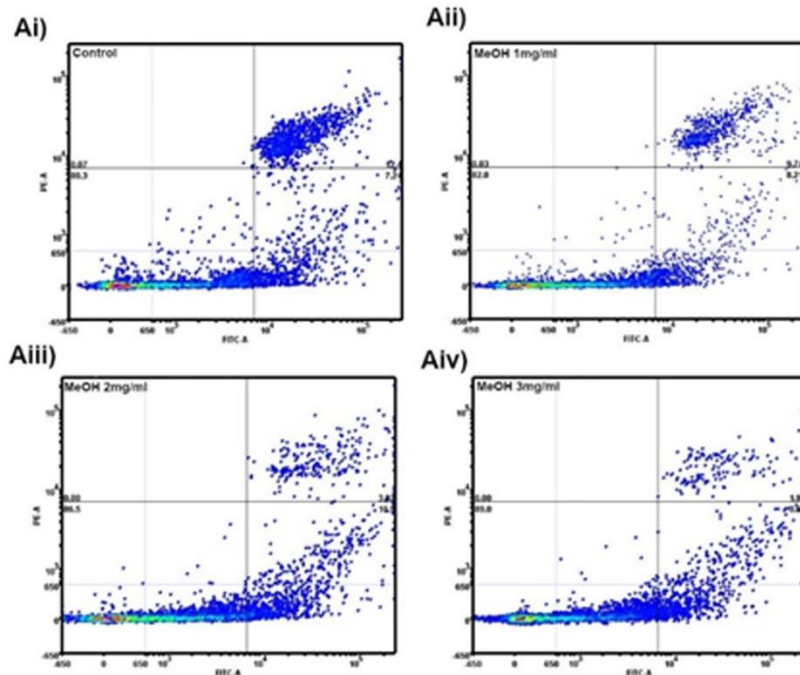


Supplementary Figure S6.



Supplementary Figure S6 :

Methanolic extract of *S barbata* leaves showed no cyto-toxicity on a normal cell line.

Ai) – Non-cancerous HCoEpiC cells with control treatment, **Aii - Aiv) -** HCoEpiC cells treated with MeOH *S. barbata* extract at 1 mg/ml, 2 mg/ml and 3 mg/ml respectively. Annexin V positive cells are on the FITC-A (X axis) and Pi positive cells are on the PE-A (Y axis). Numbers in quadrats are %, n=3s biologically independent experiments.

B) Bar chart showing the effects of the hydrophobic MeOH extract on HCoEpiC cells,, **** for P ≤ 0.0001, *** P ≤ 0.001, statistical difference compared to control (n=3). Data is displayed as individual dots. Horizontal bars show significant changes and error bars show SDev, n=3 biologically independent experiments.

C) Apoptotic induction by purified scutebarbatine A (20 µM) and methanol extract of *S. barbata* (calculated at 19 µM scutebarbatine A) on CaCo 2 cells. Bar chart shows differences, **** for P ≤ 0.0001, statistical difference compared to respective controls (n=3). Data are displayed as individual datapoints. Horizontal bars show significant differences and error bars show SDev, n=3 biologically independent experiments.