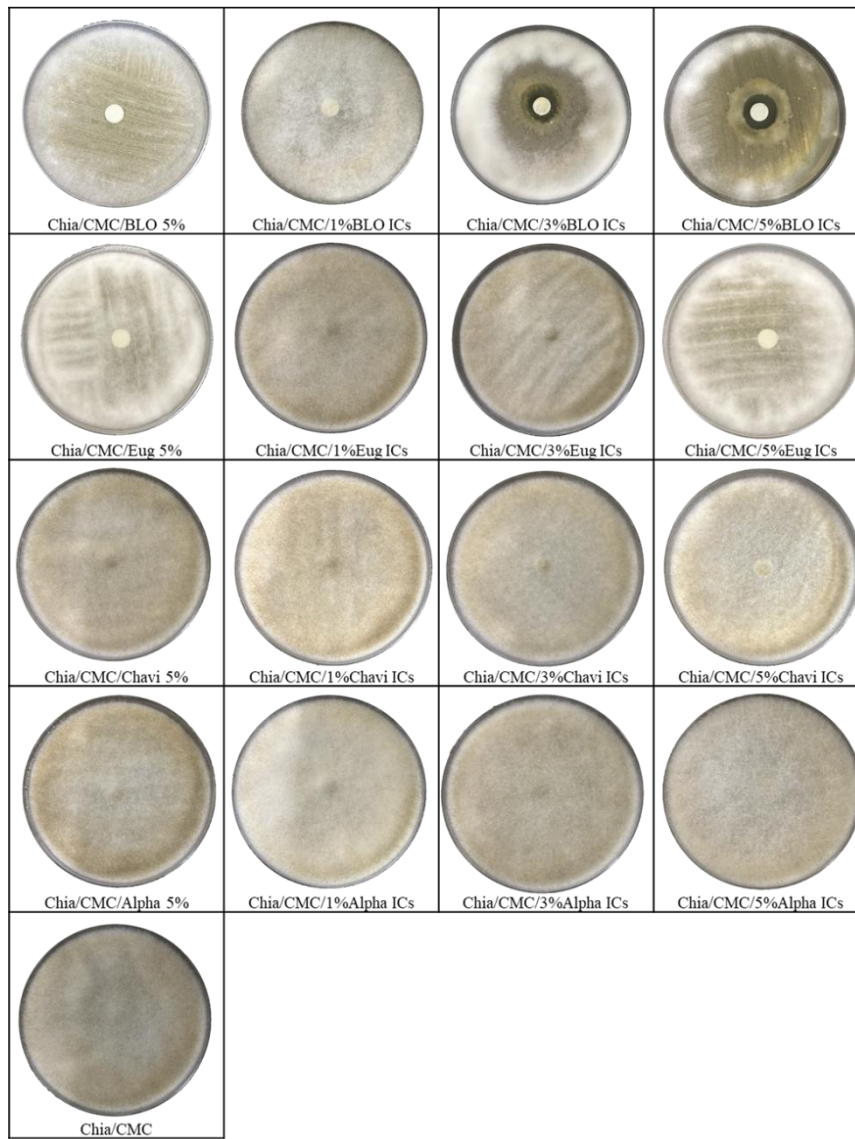


A



B

Sample	Inhibition zone (mm)	Sample	Inhibition zone (mm)
Chia/CMC	0.0 ± 0.0	Chia/CMC/Chavi 5%	0.0 ± 0.0
Chia/CMC/BLO 5%	0.0 ± 0.0	Chia/CMC/1%Chavi ICs	0.0 ± 0.0
Chia/CMC/1%BLO ICs	0.0 ± 0.0	Chia/CMC/3%Chavi ICs	0.0 ± 0.0
Chia/CMC/3%BLO ICs	3.2 ± 0.3	Chia/CMC/5%Chavi ICs	0.0 ± 0.0
Chia/CMC/5%BLO ICs	6.8 ± 0.2	Chia/CMC/Alpha 5%	0.0 ± 0.0
Chia/CMC/Eug 5%	0.0 ± 0.0	Chia/CMC/1%Alpha ICs	0.0 ± 0.0
Chia/CMC/1%Eug ICs	0.0 ± 0.0	Chia/CMC/3%Alpha ICs	0.0 ± 0.0
Chia/CMC/3%Eug ICs	0.0 ± 0.0	Chia/CMC/5%Alpha ICs	0.0 ± 0.0
Chia/CMC/5%Eug ICs	0.0 ± 0.0		

Supplementary Fig. S17. (a) Inhibitory activity of all samples against *Rhizopus stolonifer*. (b) Inhibition zone diameters (mm) of all ICs against *Rhizopus stolonifer*.