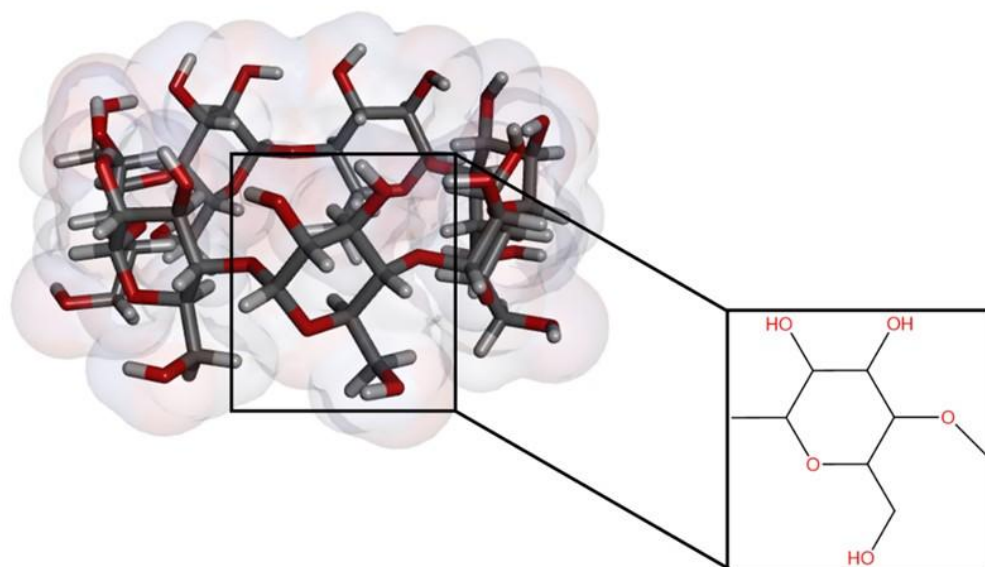
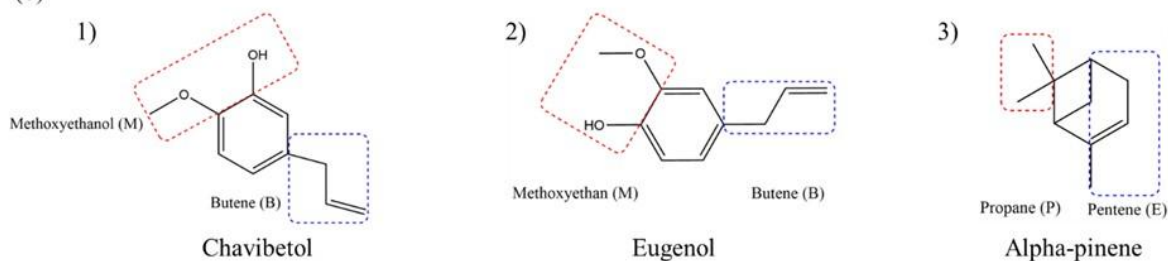


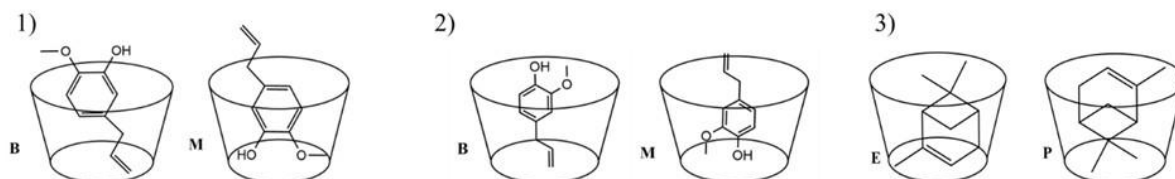
(a)



(b)



(c)



Supplementary Fig. S7. (a) 3D structure of β -CD, (b) Chemical structure of 1) Chavibetol 2) Eugenol 3) Alpha-pinene, (c) The possible orientations of 1) Chavibetol in β -CD cavity: methoxyethanol insertion (M-form) and butene insertion (B-form), 2) Eugenol in β -CD cavity: methoxyethanol insertion (M-form) and butene insertion (B-form), and 3) Alpha-pinene in β -CD cavity: propane insertion (P-form) and pentene insertion (E-form).